

2023 Great Lakes Coastal Assembly Accomplishments



Great Lakes Coastal Assembly

Shared Vision: Coastal landscapes that support the unique structures and processes essential for sustaining healthy species populations, resilient natural communities, and for providing benefits to human society

Priorities...

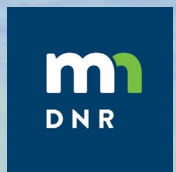
Catalyze Collaboration

Serve as a Resource

Facilitate Communication

Promote Science and Tool Development

Take a Systems Approach



Welcomed New Members

- Matt Preisser (MI EGLE)
- Eric Clark (Sault Ste. Marie Tribe of Chippewa Indians)
- Jess Collier & Mohammed Al-Saffar (USFWS)
- Jim Luke (USACE)
- David Clarke (NY DEC)
- Stephanie Beilke (Audubon Great Lakes)
- Stevie Adams (TNC)



Priorities Addressed

- ✓ Collaboration
- ✓ Resource
- Comm/Learning
- Science & Tools
- Systems Approach

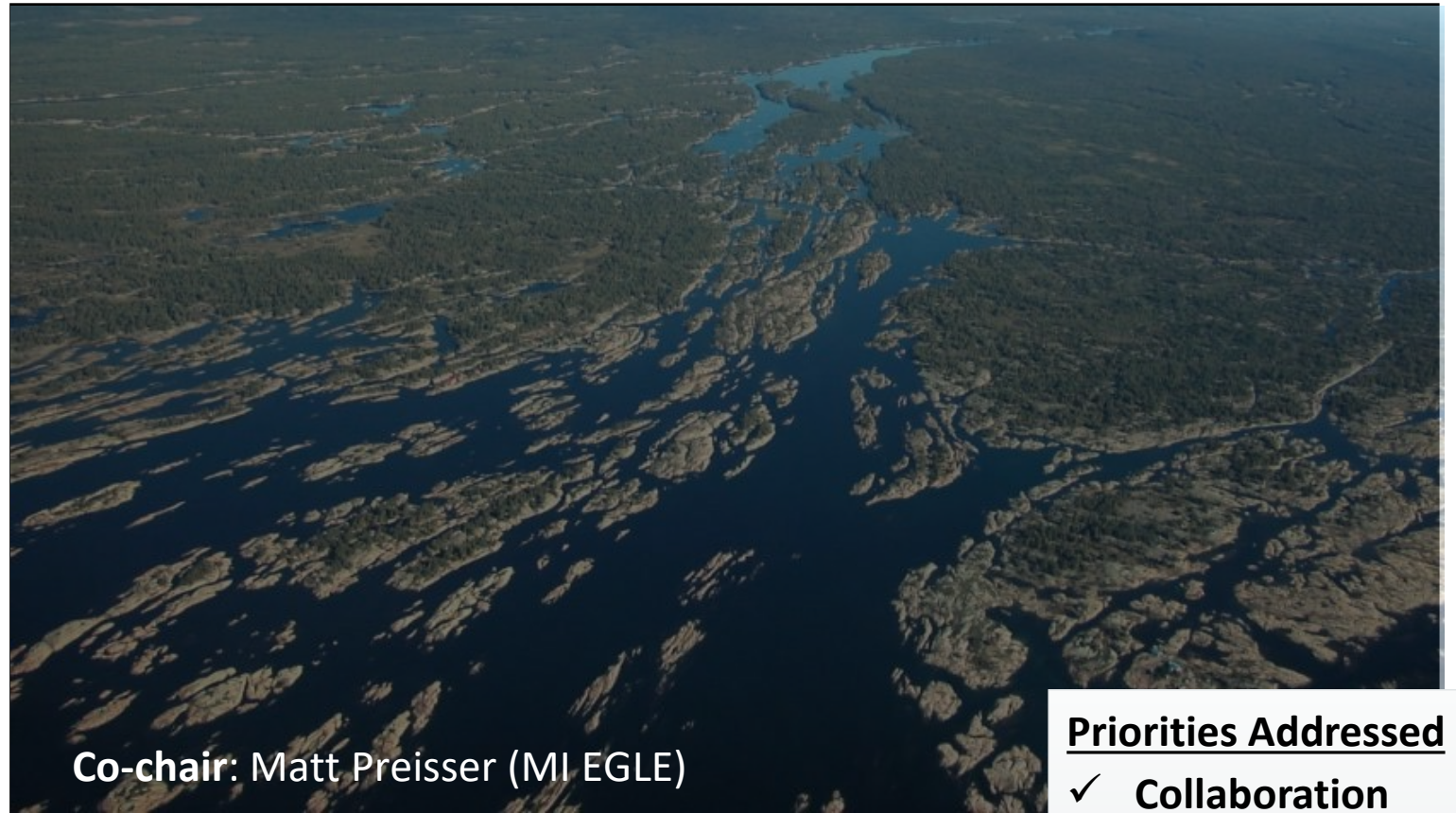
Featured Speakers

- GLRI Action Plan IV – *Kevin O'Donnell* (USEPA)
- Collaborative coastal wetland stewardship in the St. Marys River: Ongoing and planned efforts of the Sault Tribe Wildlife Program – *Dani Fegan* (Sault Tribe Wildlife Program)
- Manoomin Restoration at Bay Mills Indian Community – *Frank Zomer* (Bay Mills Indian Community)
- Great Lakes Reef Restoration Workgroup – *Jim Luke* (USACE)
- U.S. Great Lakes Coastal Resilience Assessment – *Greg Dobson* (UNC Asheville) & *Kristen Byler* (NFWF)
- Climate Resilience Challenge – *Rachel Franks-Taylor & Becky Nicodemus* (NOAA)
- Climate Resiliency Project Idea – *Ashlee Decker & Alexis Sakas* (Ohio TNC)
- Great Lakes Islands Conservation Workgroup – *Matt Preisser* (MI EGLE) & *Eric Ellis* (GLC)
- Great Lakes Coastal Resiliency Study – *Mike Padilla* (USACE)
- Climate Resiliency and Vulnerability of Apostle Islands Coastal Wetlands – *Matt Cooper* (GVSU)

Priorities Addressed

- ✓ Collaboration
- ✓ Resource
- ✓ **Comm/Learning**
- Science & Tools
- Systems Approach

Great Lakes
Islands
Conservation
Workgroup



Co-chair: Matt Preisser (MI EGLE)

Priorities Addressed

- ✓ **Collaboration**
- ✓ Resource
- ✓ Comm/Learning
- ✓ Science & Tools
- ✓ Systems Approach

Great Lakes Reef Restoration Workgroup



Co-chair: Jim Luke (USACE)

Priorities Addressed

- ✓ **Collaboration**
- ✓ Resource
- ✓ Comm/Learning
- ✓ Science & Tools
- ✓ Systems Approach

Planning 2024 Great Lakes Coastal Symposium



Co-chairs:
David Clarke (NY DEC),
Stephanie Beilke
(Audubon Great Lakes)

Priorities Addressed

- ✓ **Collaboration**
- ✓ **Resource**
- ✓ **Comm/Learning**
- ✓ **Science & Tools**
- ✓ **Systems Approach**

Great Lakes Coastal Wetland Framework: Lake Erie Pilot

- Synthesized Ongoing Work and Assessed Lake Erie Trends and Conditions
- Drafted Geospatial products for Lake Erie Basin
- Selected Priority Ecosystem Services and Indicators
- Drafted Current/Desired Status Statements, Static Maps, and DST
- Outreach to IJC, GL Canadian Coastal Webinar Series, & SB-WLE Blueprint Partner Meeting

Priorities Addressed

- ✓ Collaboration
- ✓ Resource
- ✓ Comm/Learning
- ✓ Science & Tools
- ✓ **Systems Approach**

Co-leads:

Liz Berg (USFWS), Cherie Hagen (WI DNR),
Brandon Krumwiede (NOAA)

Saginaw Bay- Western Lake Erie Basin Blueprint

Co-leads: Jenny Wong, Ben Frey, Jess Collier,
and Liz Berg (USFWS)

Priorities Addressed

- ✓ Collaboration
- ✓ Resource
- ✓ Comm/Learning
- ✓ **Science & Tools**
- ✓ Systems Approach

- Held 3 virtual and 2 in-person partner meetings in Ann Arbor and Bay City.
- Selected Ecological Targets and Indicators
- Developed suite of Human Well-Being Values and Indicators
- Drafted Static Maps, Implementation Plan, and Outreach Materials

Great Lakes Coastal Assembly Annual Meeting

*CMU Biological Station
Beaver Island, MI*



Special Thanks to: Don Uzarski, Shelby Harris, Nat Miller, Cherie Hagen, Matt Preisser, Eric Ellis, Matt Cooper, Mike Padilla, Kim Schraitle, and Conor



Priorities Addressed

- ✓ Collaboration
- ✓ Resource
- ✓ Comm/Learning
- ✓ Science & Tools
- ✓ Systems Approach